

Transportation and Parking Advisory Committee

October 5, 2022



OLD DOMINION
UNIVERSITY

TODAY's AGENDA

- Summer 2022 Repairs
- Visitor Parking Options and Updates
- Event Parking
- Fixed LPR cameras
- Peanut Butter for Parking
- Questions / Discussion
- Trivia Question
- Next Meeting: November 7, 2022



Garage Structure Repairs

- Designed in 2019, delayed by COVID
- Multi-year effort to support garage service life
- Work locations in each garage
 - Water intrusion (joint sealants and expansion joints)
 - Concrete repair
 - Double tee shear connectors
 - Double tee bearing pads
 - Safety items



Garage Structure Repairs



Garage Structure Repairs



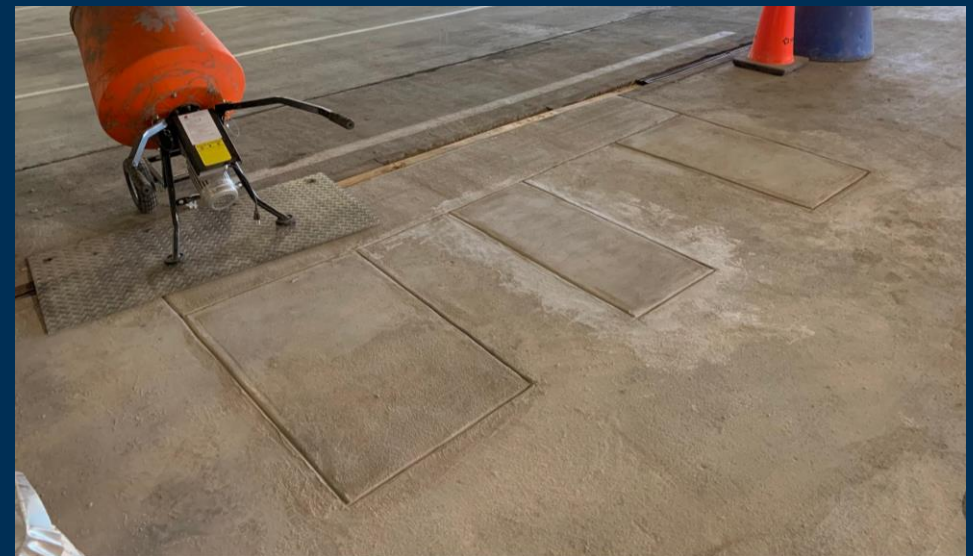
Garage Structure Repairs



Garage Structure Repairs



Garage Structure Repairs



Garage Structure Repairs



Parking Lot Resurfacing / Restriping




TPS Dashboard: Fall 2022 Parking Permits

Customer Type	Active Permits October 2022	Active Permits November 2021
Student Commuter	4,384	4,265
Student Resident	1,530	1,396
Faculty/Staff	1,799	1,420



Visitor Parking Options

- \$1.50 / Hour MobilePay
- \$8 Daily Permit
- \$20 Weekly Permit
- \$60 Monthly Permit



Visitor Parking

Office of the President ▾ Administration & Organization ▾ Board of Visitors ▾ Accreditation Facts & Figures ▾ History & Archives ▾ More ▾

[Home](#) > [About ODU](#) > [Visitor's Guide](#) > [Visitor Parking](#)

Welcome to ODU!

Visitors and guests driving to ODU have several options for parking on campus: **Daily Permit, Weekly Permit, 30-Day Permit, or hourly parking.** Payment must be made immediately upon parking your vehicle. Parking Regulations are strictly enforced, so please ALWAYS use a permit or pay-to-park to avoid enforcement (citations, booting, towing).

We encourage Faculty, Staff, and Students to direct their guests to use hourly parking. If visitors plan on staying for an entire day or weekend, we recommend they purchase a Daily Permit. If visitors plan on staying for a longer period of time we recommend they purchase a Weekly or 30-Day Permit.

Permits can be purchased [online](#) or in person at the [Transportation & Parking Services \(TPS\)](#) office located at 43rd & Elkhorn Garage.

Parking for Transportation & Parking Services customers is located in the 43rd & Elkhorn Garage for 15 minutes in spaces marked "15 Minute Parking" on Level 1.

VISITOR PARKING TIPS

- **ALL** vehicles parked on campus requires a valid ODU parking permit or hourly parking payment!
- Hourly parking requires immediate payment upon parking your vehicle.
- **Disability Parking** requires valid ADA Placard/Plate *plus* parking permit or hourly parking payment.
- When in doubt, [contact us](#) for help.

Contact

Transportation & Parking Services

4310 Elkhorn Ave.
Norfolk, VA 23508
757-683-4004 (office)
757-683-3194 (fax)
parking@odu.edu

[Hours & Directory](#) ▶

VISIT CAMPUS

Schedule your visit with us and we'll open the house for you and give you special access to professors, students, and places.

[Plan Your Visit](#) ▶

LODGING



MobilePay Locations

4,144 spaces available for hourly parking

421

74

430

720


11

20

583

769

1,116



Using MobilePay at ODU



Complimentary Guest Parking Options

- Department Reserved Space – managed by administrative staff
- Monarch Pass – paper hang tags (25 for \$150) – single day use only
- Validation Code with Off-Street (replaces MobilePay validations)
 - \$125 annual fee per code type plus:
 - Quarterly billing based on validation use
 - 2 hours parking for \$2 per use
 - 4 hours parking for \$4 per use
 - All day parking for \$6 per use



Validation Code with Off-Street

- Validations or registrations with License Plate Recognition
 - All five parking garages
 - Lot 43 (43rd and Powhatan Ave)
 - Virtual – no customer account required
 - No credit card information required
- Smart-phone, QR code or emailed in advance



Off-Street Validation Locations

4,229 spaces available for hourly parking

430

583

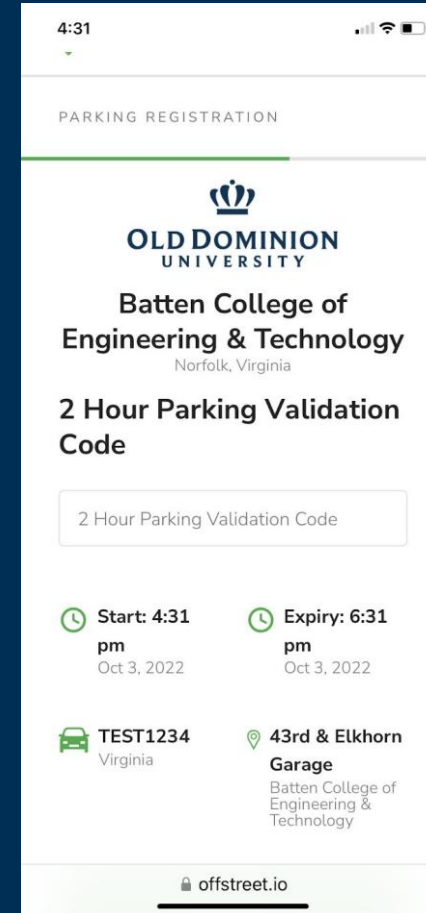
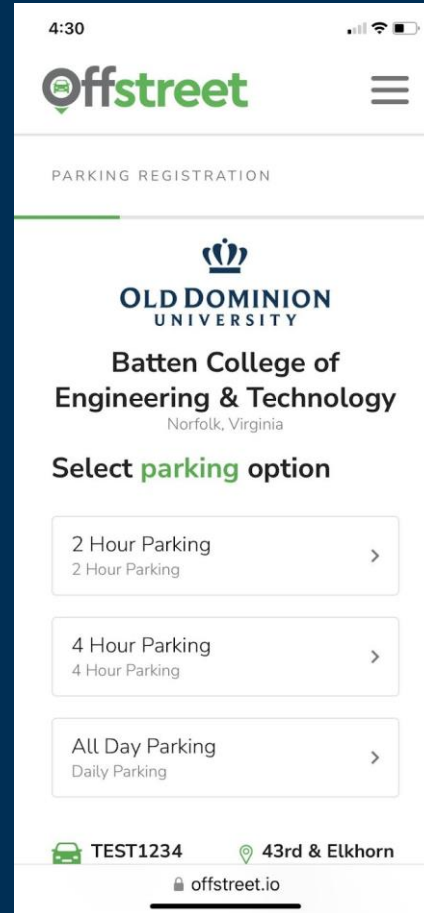
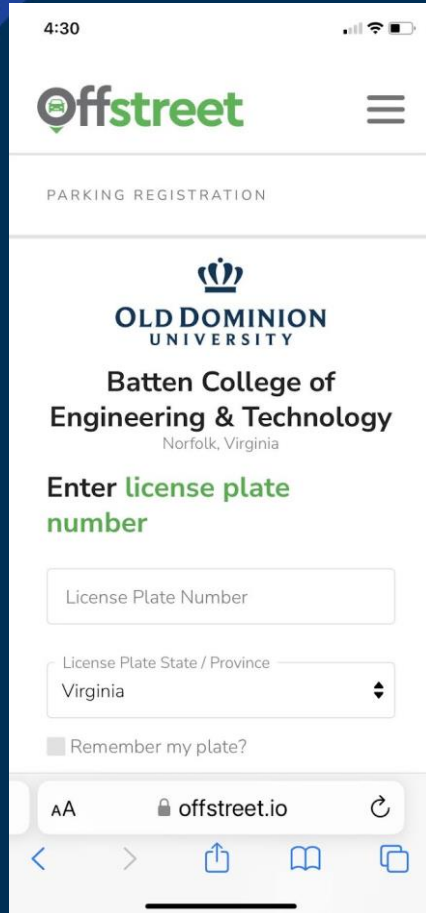
611

720

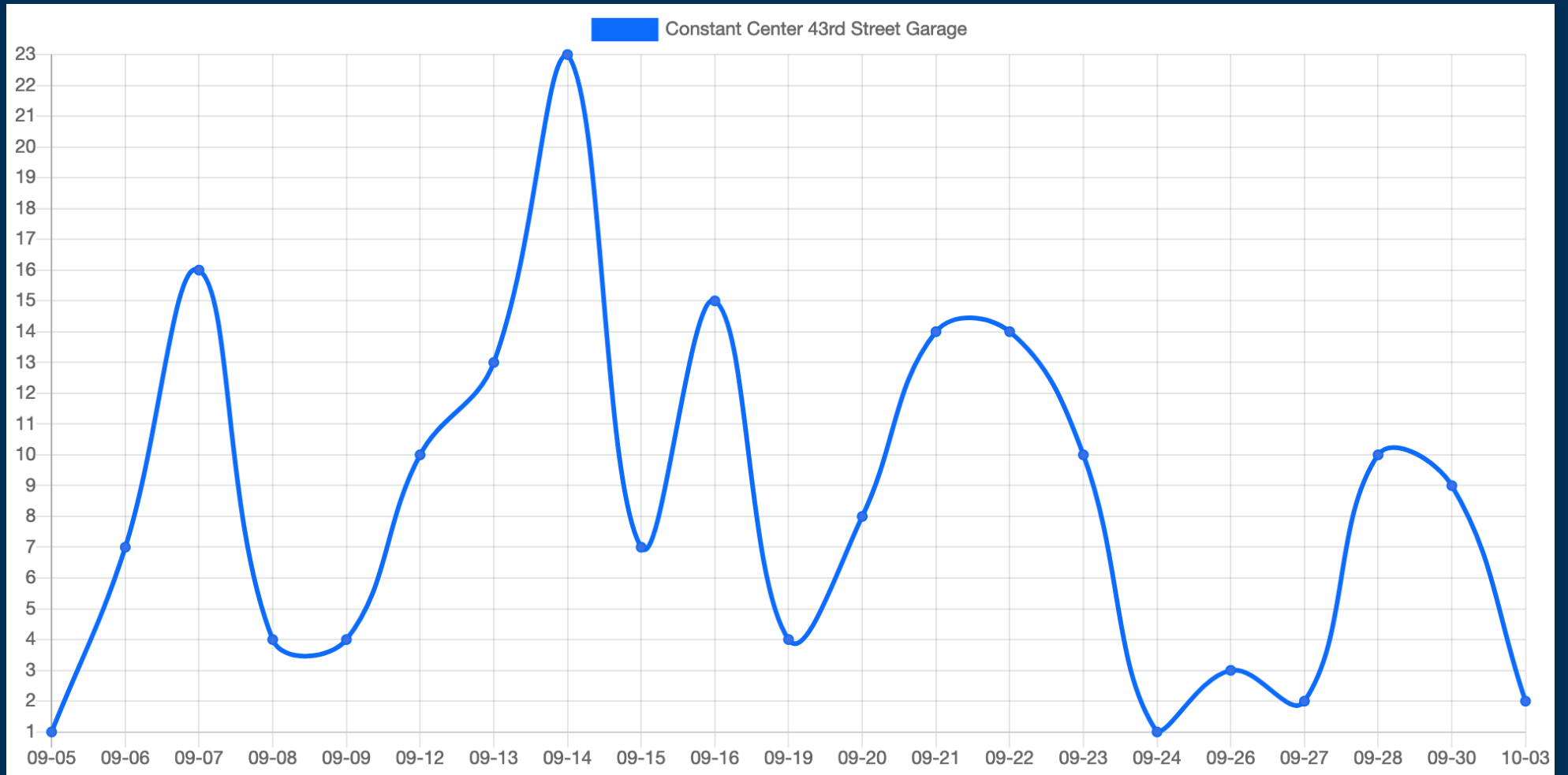
769

1,116

Validation Code with Off-Street

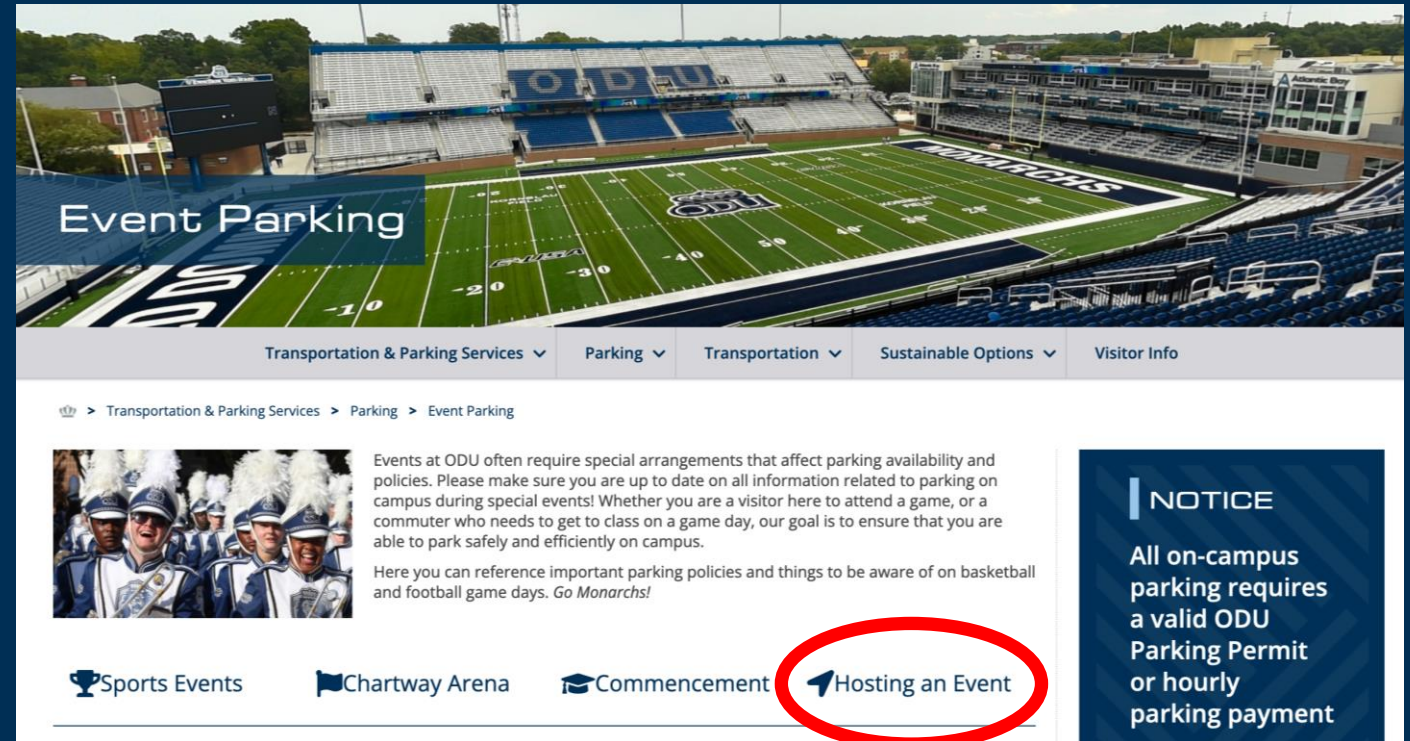


September Validations in CC43 Garage



Special Events – Parking & Transportation


- What is an event?
- Event request form
- Costs depend on event host, size, scope and timing
- \$8 per vehicle weekdays
- Transportation depends on availability



Event Parking

Transportation & Parking Services ▾ Parking ▾ Transportation ▾ Sustainable Options ▾ Visitor Info

👑 > Transportation & Parking Services > Parking > Event Parking



Events at ODU often require special arrangements that affect parking availability and policies. Please make sure you are up to date on all information related to parking on campus during special events! Whether you are a visitor here to attend a game, or a commuter who needs to get to class on a game day, our goal is to ensure that you are able to park safely and efficiently on campus.

Here you can reference important parking policies and things to be aware of on basketball and football game days. *Go Monarchs!*

🏆 Sports Events 🏠 Chartway Arena 🎓 Commencement 📍 **Hosting an Event**

NOTICE
All on-campus parking requires a valid ODU Parking Permit or hourly parking payment



Fixed (not mobile) LPR Cameras



- August 2022: Operating
 - 43rd & Elkhorn Garage
 - 43rd & Bluestone Garage
- Real-time data:
 - Facility occupancy
 - License plates paid or in violation
 - Duration of stay (turnovers)
- Efficient enforcement



Peanut Butter for Parking



October 4th - 6th 2022

Pay your ODU Parking Citation with a donation of Peanut Butter & help Norfolk Public Schools students experiencing food insecurity! The guidelines are as follows:



Peanut Butter for Parking: Oct 4 – Oct 6

- 1 ounce = \$1
- Whole amounts only (26.5 ozs = \$26)
- Limit 100 ounces (\$100) per customer
- Unpaid citations only – no refunds
- All unpaid citations on account must be paid to donate
- Can only pay your own citations
- Excludes citations in appeal or re-appeal
- Donations only in TPS Office from 8:30 AM to 4:30 PM



Questions?



Trivia

In the early 20th Century, Virginia Governor Claude A. Swanson signed the first legislation requiring automobiles to register with the Secretary of the Commonwealth.

What was the first car model registered?

Source: <https://vsp.virginia.gov/about-us/department-history/>



Trivia Answer

1906 Oldsmobile
was registered in
Staunton, VA on
June 12, 1906

