



**OFFICE OF ENVIRONMENTAL HEALTH
AND SAFETY**

5255 Hampton Blvd. ♦ Spong Hall,
Suite 2501 ♦ Norfolk, Virginia 23529
Phone: (757) 683-4495 ♦ Fax: (757) 683-6025

*Occupational Safety & Health ♦
Environmental Health ♦
Laboratory Safety ♦ Industrial Hygiene ♦
Radiation Safety ♦
Hazardous Waste ♦ Pollution Prevention*

Grace Holmes
MS4 Water Compliance Coordinator
Department of Environmental Quality Tidewater Regional Office
5636 Southern Blvd
Virginia Beach, Virginia 23462

October 1, 2024

Re: MS4 General Permit Annual Report Old Dominion University
General Permit Registration Number VAR 040078

A. Background Information

1. Old Dominion University, General Permit Registration Number VAR 040078
2. Permit Year 2022
3. Annual Standards and Specifications were revised and submitted
4. No new MS4 outfalls were added during the permit year
5. Signed certification attached (Attachment F)

B. MCM 1 - Public Education and Outreach

ODU's Public Education and Outreach efforts related to the high-priority water quality issues take the following forms: Public Service Announcements; Storm Drain Marking; and Pamphlet distribution.. The following describes ODU's ability to educate affected community members with regard to the stated High-Priority Water Quality Issues:

- **Petroleum Releases** - the potential for petroleum releases within the confines of the MS4 permitted areas is great due to the amount of automobile traffic that the campus sees each year from faculty, staff, students, and contractors. ODU uses several methods for informing the affected population of this potential and the importance of reporting any illicit discharges. Transportation and Parking Services utilizes online parking pass purchasing for 94 percent of sales

parking passes. ODU has maintained a link on their permit purchase and their citation payment pages to our Stormwater Management page. This year there were 19,478 parking passes sold online to ODU faculty, staff, and students. Additionally, there were 7,688 parking citation payments made through the payment portal. The Department of Human Resources puts informational pamphlets in each New Employee Packet given to new hires. This year ODU hired 312 new employees during the 2023/2024 reporting year. All pamphlets have information regarding what constitutes an illicit discharge and how to notify the Environmental Health and Safety Office if they witness a release. The Environmental Health and Safety Office also places markers at each storm drain inlet that state "Only Rain Down the Storm Drain". and the EHSO mainline phone number is included on the markers so that illicit discharges can be reported in a timelier manner. ODU also displays public service announcements over the information screens of Webb Student Center that are visible by the public in several locations within the facility. This year we continued the public service announcements to dormitories with CCTV and displayed posters in dormitories that do not have those monitors. The pamphlet and community education contacts provide information on how to identify and report illicit discharges.

- Litter and Debris – litter and debris control is an ongoing high priority issue for the campus from a pollution prevention standpoint. ODU utilizes the same efforts mentioned above in the Petroleum Releases section for informing the community about how to identify and report releases of this kind. Fliers, pamphlets, storm drain markers, and public service announcements identify various types of illicit discharges and how they can be reported to the Environmental Health and Safety Office.
- Sediment Deposition – erosion and sediment control is maintained by contractors who perform work involving regulated land disturbing activities. Inspections of permitted sites were performed, as noted in our Annual Standards and Specifications, by DEQ Certified third-party contractors. ODU's Department of Design and Construction has two full time employees who conduct site inspections as part of their daily responsibilities. Reports of erosion and sediment control inspections are forwarded to the Environmental Health and Safety Office for review and record keeping. The Project Managers for each site respond to any recurring problems noted in the reports of erosion and sediment control activities. This was not necessary with any land disturbing activities during this permit year.

In the coming year, ODU will use the same outreach efforts, including the link to our Stormwater Page for Parking Pass Purchases and public service announcements targeted to faculty, staff, and students who frequent the campus. We are confident that these outreach and education efforts within the campus community will continue to provide a broader audience than in previous years.

ODU's MS4 Program Plan is available to the public at <https://www.odu.edu/life/sustainable/stormwater-management>. There were no comments received from the public concerning the program plan and no changes made to the MS4 Program Plan. There were no reports of potential illicit discharges during the permit year. Currently our MS4 Program Plan is undergoing an update that will be complete by the end of October 2024.

A. MCM 2 - Public Involvement

- Stormwater Pollution Prevention Plan (SWPPP) – a copy of the plan is maintained on the Environmental Health and Safety Office website at <http://www.odu.edu/life/sustainable/stormwater-management>
- MS4 Program Plan – a copy of the Program Plan is maintained on the Environmental Health and Safety Office website at <http://www.odu.edu/life/sustainable/stormwater-management>
- Annual Reports – copies of the previous three annual reports are maintained on the Environmental Health and Safety Office website at <http://www.odu.edu/life/sustainable/stormwater-management>
- Public Participation – this metric is met by several different means. ODU usually holds a minimum of four Adopt-A-Stream events annually. This year we held two Adopt-A-Stream events in April to clean debris from shorelines adjacent to the Elizabeth River and Lafayette River. Additionally, we had volunteers replace storm drain markers around campus on three occasions for newly installed drop inlets as well as those that have been removed due to weathering.

B. MCM 3 - Illicit Discharge Detection and Elimination

Attached (Attachment A) is a map and table of our nine outfalls that includes the HUC Code, a description of the outfall, the receiving waters, predominant land use of the areas drained, latitude and longitude, and associated TMDLs. There were changes to the map of coverage area and outfalls as new information was ascertained from a review of campus data. Below the table is a map of the MS4 coverage area. Also attached (Attachment B) is a map of the stormwater management facilities owned by ODU.

ODU notified the City of Norfolk Environmental Programs coordinator on June 26, 2023, to reaffirm that ODU's storm sewer system is interconnected with the city's storm sewer system. Attached (Attachment C) is a copy of the letter. ODU also maintains regular contact with the City of Norfolk to exchange pertinent information related to respective MS4 service areas and any potential illicit discharges.

This year the Environmental Health and Safety Office performed an annual screening of three outfalls and five nodes during dry weather conditions. After internal review of our MS4 permit area six more outfalls were noted and will be added to the inspection process. The parameters used to screen each of the outfalls and nodes were wet/dry,

odor present, sheen present, debris present, and general condition comments. There were no significant findings. Attached(Attachment D) is a copy of the Dry Weather Inspection.

ODU did not perform any sampling or monitoring beyond the Dry Weather Inspection of outfalls and nodes. ODU's lack of potential for harmful/illicit discharges due to limiting bulk storage of materials that have a potential for releases as well as the monitoring that occurs with relation to fuel storage and dispensing has rendered sampling of outfalls unwarranted. This will remain open to modification should any of ODU's processes change such that sampling of outfalls becomes necessary.

ODU did not receive any reports of illicit discharges during the permit year. Typically any reports of spills on campus lands are reported by the Grounds Division as they are trained to identify and report spills to the Environmental Health and Safety Office, and have daily coverage of the entire campus.

C. MCM 4 - Construction Site Stormwater Runoff Control

ODU's Department of Design and Construction hires a design team including civil engineers who develop the site plan, Stormwater Plan, and Erosion and Sediment (E&S) Control Plan for all regulated land disturbances. Both the Stormwater Plan and E&S Control Plan are submitted for review and approval. All land disturbing activities greater than 2,500 square feet are required to follow the instructions listed in ODU's Annual Standards and Specifications and be approved by a DEQ Certified third party. Land disturbances greater than one acre require a DEQ issued General Virginia Pollution Discharge Elimination Systems Permit. During this permit year ODU had two regulated land-disturbing activities take place on the campus. The following includes metrics related to the regulated land disturbances including total acreage and total number of inspections conducted by DEQ-certified third-party contractors.

- New Health Sciences Building
 - 5.2 Acres
 - 41 erosion and sediment inspections
- Health and Wellness Center
 - 1.1 Acres
 - 10 erosion and sediment inspections

The Environmental Health and Safety Office receives copies of all inspection records for review. While there were some minor infractions noted in various inspections, corrections were promptly made in each case and no enforcement actions were required. Each report is reviewed, and recurring issues are reported to the Project Managers to be promptly corrected. There were no recurring problems with E&S inspections during the permit year.

D. MCM 5 - Post-construction Stormwater Management

No new stormwater management facilities were added to the MS4 during the permit year. Old Dominion University's BMP Warehouse data was completely updated to include all BMPs in the MS4 permit area.. There were no offset credits purchased during the permit year.

ODU performed a visual inspection of physical BMPs on 4/23/24 after a 0.39" rain event that occurred on 4/21/24. Going forward all BMP inspections will be performed by a DEQ certified inspector. The parameters that were checked include:

1. Inlet/Outlet clearance
2. Sign of erosion/stability of turf
3. General debris
4. Comments/Other observations

Attached (Attachment E) is a copy of ODU's visual inspection report.

1. Summary of Offsets Provided by Existing BMPs:

VHB TMDL Action Plan 2023 Summary					
Permit Cycle	Removal	POC Removal			
		TP	TN	TSS	
2023	Total Removal Required	13.01	47.94	6009.50	
	Offsite Nutrient Credit Purchase	13.43	134.88	10295.24	
2023	Total Removal Achieved	13.43	134.88	10295.24	

*Offsite Nutrient Credit Purchase meets 2023 Requirments (2028 Requirements to be met over the next permit cycle)

Name/Description	Reduction Means/Method	Removal Required (lb/yr)	TSS Removal Efficiency	TP	TN	TSS
Computational Sciences Lot 42	Bioretention Basin	0.21	0.55	0.05	0.14	9.82
43 rd Street Parking Garage	Hydrodynamic Separator	0.68	0.1	0.18	0.04	5.90
	Hydrodynamic Separator	0.68	0.1	0.14	0.03	4.81
Oceanography and Physical Sciences Wrestling Addition	Wet Pond	6.08	0.6	1.57	1.30	315.07
	Infiltration Basin	0.00	0.95	0.00	0.00	0.00
Tennis Center	Bioretention Basin	1.76	0.55	0.46	1.20	83.81
Physical Sciences	Filterra System	0.19	0.8	0.05	0.13	13.18

Student Recreation Center	Filterra System	0.25	0.8	0.07	1.17	2.68
Student Recreation Center	Bioretention Basin	0.64	0.55	0.17	0.44	30.58
Student Recreation Center	Hydrodynamic Separator	0.31	0.1	0.08	0.02	2.68
Quad Student Housing	Cistern	0.00	0	0.00	0.00	0.00
Gornito	Wet Pond	1.24	0.6	0.32	0.26	64.25
Teletechnet	Hydrodynamic Separator	0.30	0.1	0.08	0.02	2.61
Constant Hall	Cistern	0.00	0	0.00	0.00	0.00
Garage E	Bioretention Basin	0.25	0.55	0.07	0.17	12.08
Student Success Center	Bioretention Basin	0.68	0.55	0.18	0.47	32.47
Dragas Hall	Bioretention Basin	0.50	0.55	0.13	0.34	23.78
Diehn Fine and Performing Arts	Planter					
New Art Building	Filterra System	0.11	0.8	0.03	0.08	7.69
Systems Research	Bioretention Basin	0.86	0.55	0.22	0.59	0.77
New Art Studio Building	Filterra System	0.17	0.8	0.05	0.12	12.08
New Education	Bioretention Basin	1.07	0.55	0.27	0.73	50.59
New Education	Pervious Pavers	0.30	0.59	0.08	0.19	15.39
Football Stadium	Pervious Pavers	2.43	0.55	0.76	5.46	368.44
New Chemistry	Pervious Pavers	2.12	2.40	1.31	9.36	522.05
Owens House	Bioretention	1.76	2.20	0.44	3.70	128.76

Basins

Offsite Nutrient	13.43	134.88	10295.24
Credit Purchase		159.88	12065.39
SUM	21.14	15.99	

- 4.2. There are two projects slated to be completed during the upcoming reporting year and associated management facilities will be added to the inventory as each comes online.

Name/Description	Reduction Means/Methods
New Health Sciences	Permeable Pavers Bioretention Basin
Health and Wellness Center	Permeable Pavers

These projects were still under construction during the permit cycle.

E. MCM 6 - Pollution Prevention/Good Housekeeping

Stormwater Pollution Prevention Plans (SWPPP)

After assessing the campus activities and storage areas for potential major releases ODU did not note any areas that might be considered a “High Risk” for release to the storm sewer system. As a result of this assessment, it was decided that a Stormwater Pollution Prevention Plan (SWPPP) that addressed the campus as a whole, with specific attention to ODU’s High-Priority Water Quality Issues, would be the most comprehensive tactic. ODU has taken the approach of considering the campus as one High Risk area and have developed a SWPPP for the entire campus focusing on vehicular pollutants, nutrient pollutants, litter and debris, and sediment deposition. The SWPPP was completed in August of 2016 and can be found at <http://www.odu.edu/life/sustainable/stormwater-management>. Annual review of Daily Activities is performed to ensure specific departmental activities are still proceeding as written in the Program Plan. An inspection of our Facilities Management building and surrounding equipment storage areas resulted in no significant findings. No modifications to the SWPPP have been made during the permit year, however the SWPPP is currently undergoing an update and will be submitted to the DEQ by October 28, 2024.

The Daily Activities noted by ODU that require operational summaries are as follows:

- **Lawn Maintenance**
Lawn maintenance (cutting/trimming) activities are controlled by the Grounds Divisions of Facilities Management. All clippings and trimmings are collected and stored for composting. All materials gathered are put in a designated dumpster and the dumpster is taken by a contractor to be composted.

- Nutrient Management**

Nutrient Management (fertilizing) is dictated by ODU's Nutrient Management Plan. A link to the Plan (revised 2022) can be found at <http://www.odu.edu/content/dam/odu/offices/environmental-health-safety/docs/nutrient-management-plan.pdf>. Nutrient management affects two departments on campus: University Grounds and Athletic Grounds. There are nine individuals who are qualified as Certified Fertilizer Applicators (CFAs). Eight are affiliated with University Grounds and one with Athletic Grounds. Activities that contribute to the prevention of illicit discharges are the covering of any grated storm drain inlets in the fertilizing areas and blowing any residual fertilizer off of impervious surfaces back on to the intended target lawn or bed. Each member of Grounds attended Stormwater Management Class during this reporting year. The training, offered by the Environmental Health and Safety Office, is an online module, Safe Colleges, that covers stormwater management issues including pollution prevention and best management practices. The training was delivered to twelve employees between June 24 and June 27, 2024. ODU will continue to deliver the training in accordance with the permit in an effort to better inform our frontline stormwater employees. A new training module that will meet the requirements described in Part I.E.6.d.(1)-(6) of the permit is currently in development.
- Old Dominion University is required to have a Nutrient Management Plan in place to cover all 173.5 acres, of which approximately 19.65 acres are managed with nutrients.
- All personnel who apply nutrients have passed the Virginia Certified Fertilizer Applicator Exam.
- Nutrient Application Locations:**

Location	Latitude	Longitude
Soccer Field	36.883975	-76.310912
Soccer Practice Field	36.883603	-76.311987
Whitehurst Field	36.885539	-76.315139
Baseball Field	36.883919	-76.308999
Kaufman Mall	36.886539	-76.304909
Williamsburg Lawn	36.88992	-76.303745
Runte Quad	36.886007	-76.310011
VMASC	36.869353	-76.418136
Tri-Cities	36.869109	-76.417063

- Fleet Maintenance**

University vehicles are maintained twice annually by the Motor Pool Department, and they are checked for any leaking fluids. ODU has a work

order system in place so that operators or individual departments can request service if any leaks develop in the interim. Any spills of automobile fluids are reported to the Environmental Health and Safety Office and cleaned up immediately. Car Washing of most university vehicles is done in a closed wash bay that has a drain connected to the sanitary sewer. No vehicles are washed on impervious surfaces that may lead to the ODU storm sewer system.

- **Litter Control**
Litter control is an ongoing, daily battle. The Grounds Division and Housing and Resident Life collect waste from all campus areas daily. Grounds has four full-time dedicated employees who collect debris from all areas around campus and Housing Housekeeping personnel focus on areas surrounding the dormitories daily.
- **Parking Lot Maintenance/Street Sweeping**
Street and lot sweeping is done on a weekly basis and after significantly attended campus events such as football games. Refuse collected is sent to the landfill unless it is leaves, which are added to the green waste recycling program as compostable material.
- **Bulk Storage**
Bulk storage of materials such as salt, pesticides and fertilizers is done at indoor or covered facilities to prevent the potential for runoff. Materials such as topsoil, sand, or mulch are only ordered on an as-needed basis and covered with tarps to prevent runoff during storage.
- **Training**
Stormwater Pollution and Prevention (SPP) training has been incorporated in with the training that the Environmental Health and Safety Office provide to all Facilities Management employees who receive Hazard Communication Training. These employees are reasonably expected to work with or come in contact with hazardous materials through the course of their work assignments. The SPP training consists of topics related to the regulatory history of stormwater laws, point source and non-point source pollution, current Virginia regulations on stormwater pollution prevention, pollution prevention control measures, structural and non-structural best management practices that ODU employs, litter control, spill control techniques, and who to notify if they are involved in or witness an illicit discharge. Training sessions are now available online through the Safe Colleges online training platform for affected personnel as well as those with general interest in pollution prevention. The overall objective of the training is to impress the importance of preventing illicit discharges to the storm sewer system and to promote reporting of any noted discharges. The training is held at a minimum of every two years for affected employees.
- **Illicit Discharge Detection and Elimination (IDDE)**
ODU developed an IDDE as a requirement of the National Pollutant Discharge Elimination System (NPDES) the most recent revision of the

IDDE was performed in August of 2020 to reflect changes in infrastructure that have occurred since 2016. The addition of all utilities was included in the update.

The updated IDDE includes new buildings and structures, above ground improvements, and below ground utilities. The purpose of this program is to implement a campus wide strategy to find, fix, and prevent illicit discharges.

All affected department managers were briefed on their responsibilities with regard to pollution prevention activities and signed off on respective activities with the plan.

F. MS4 Program Plan

ODU will continue to undertake the same activities stated above for MCM 1 through MCM 6 during the next reporting cycle until the completion of ODU's revised Program Plan that will be completed by October 28, 2024.

G. BMP Assessment

Old Dominion University has assessed the appropriateness of efforts related to each of the minimum control measures listed in the General Permit. Reports of spills and potential illicit discharges from faculty, staff and city officials supports that ODU's efforts detailed in MCMs 1 through 6 are suitable and effective means of identifying and preventing illicit discharges to the storm sewer system.

H. Program Plan Modifications

Old Dominion University's program plan has been modified by the revision of our Annual Standards and Specifications which are currently awaiting approval. ODU also developed and implemented a Stormwater Pollution Prevention Plan to target the prevention of illicit discharges from the four identified high priority water quality issues. Each plan can be found for review at a <http://www.odu.edu/life/sustainable/stormwater-management>.

I. Expected Control Measures

Building	BMP
New Health Sciences	Permeable Pavers and Dry Retention Basin

Health and Wellness Center	Permeable Pavers
----------------------------	------------------

Old Dominion University completed a topographical map of land elevations that was used to update the Stormwater Master Plan which was completed in September of 2023, ODU will contract for services to complete one or more stormwater improvement projects to reduce our pollutant loads to meet the 2028 reduction requirements.

J. Chesapeake Bay TMDL Action Plan Implementation

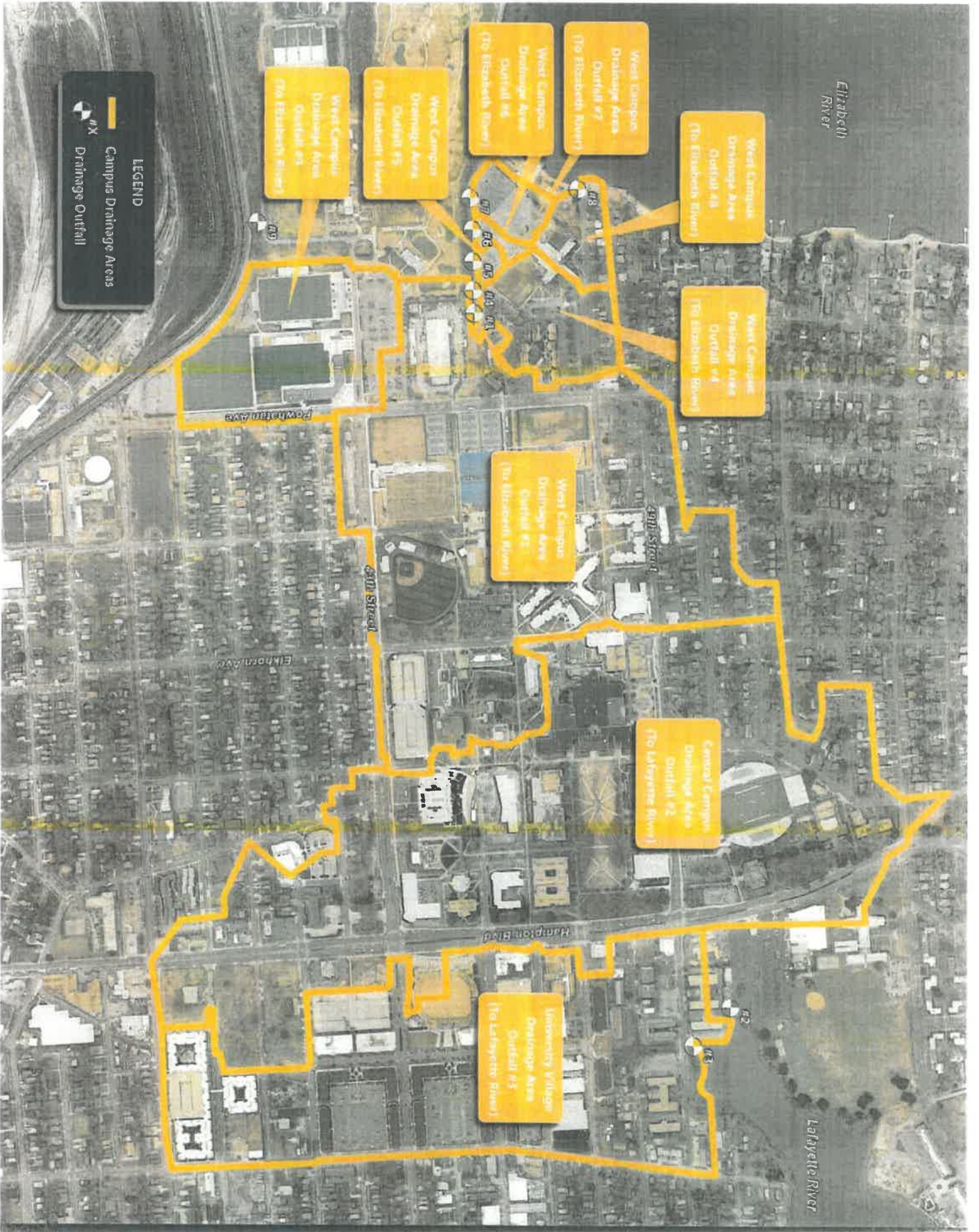
There are currently no local TMDL action plan requirements for ODU beyond the requirements of the Chesapeake Bay TMDL Action Plan. The updated ODU TMDL Action Plan was developed by Vanasse Hangen Brustlin, Inc. in May of 2024. The Pollutants of Concern reductions were met for the first permit cycle. The University is actively working toward meeting the reduction requirements for the current permit cycle ending in 2028.

Attachments enclosed:

- A – Map of Coverage Area and Outfalls
- B – Stormwater BMP Map
- C – Storm Sewer Interconnectivity Letter
- D – Dry Weather Inspection
- E – Physical BMP Inspection
- F – Certification Statement

Attachment A

Outfall Number	Location	Description	Outfall Drainage Area (ac)
1	West Campus, South of Whitehurst Hall	78" CMP culvert to tidal canal to Elizabeth River	86.90
2	East Campus, North of Rogers Hall	Double 42"x60" RCP box culvert to tidal canal to Lafayette River	121.09
3	East Campus, East of Rogers Hall	Double 48" RCP culvert to tidal canal to Lafayette River	67.76
4	West Campus, South of Whitehurst Hall	36" RCP culvert to tidal canal to Lafayette River	9.49
5	West Campus, South of Whitehurst Hall	18" RCP culvert to tidal canal to Lafayette River	0.61
6	West Campus, South of Whitehurst Hall	15" RCP culvert to tidal canal to Lafayette River	0.84
7	West Campus, South of Whitehurst Hall	24" RCP culvert to tidal canal to Lafayette River	2.90
8	West Campus, Northwest of Whitehurst Hall	18" RCP culvert to Elizabeth River	4.14
9	West Campus, South of L.R. Hill Sports Complex	42" RCP culvert to Elizabeth River	20.34



Elizabeth River

Layella River

West Campus
Drainage Area
Outfall #4
(To Elizabeth River)

West Campus
Drainage Area
Outfall #4
(To Elizabeth River)

West Campus
Drainage Area
Outfall #7
(To Elizabeth River)

West Campus
Drainage Area
Outfall #8
(To Elizabeth River)

West Campus
Drainage Area
Outfall #5
(To Elizabeth River)


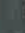
West Campus
Drainage Area
Outfall #1
(To Elizabeth River)

West Campus
Drainage Area
Outfall #2
(To Elizabeth River)

Central Campus
Drainage Area
Outfall #2
(To Lafayette River)

University Village
Drainage Area
Outfall #3
(To Lafayette River)

LEGEND

 Campus Drainage Areas
 Drainage Outfall

Powhatan Ave

Elkhorn Ave

4th Street

4th Street

Hampden Blvd

#1

#2

#3

#4

#5

#6

#7

#8

#9

#10

#11

#12

#13

#14

#15

#16

#17

#18

#19

#20

Attachment B





**OLD DOMINION
UNIVERSITY**

I D E A FUSION

OFFICE OF ENVIRONMENTAL HEALTH AND SAFETY
5255 Hampton Blvd. ♦ Spong Hall, suite 2501 ♦ Norfolk, Virginia 23529
Phone: (757) 683-4495 ♦ Fax: (757) 683-6025

*Occupational Safety & Health ♦ Environmental Health ♦ Laboratory Safety ♦ Industrial
Hygiene ♦ Radiation Safety ♦ Hazardous Waste ♦ Pollution Prevention*

June Whitehurst
Assistant Storm Water Engineer
City of Norfolk
Public Works Operations
2233 McKann Avenue
Norfolk, VA 23509

June 26, 2023

Ms. Whitehurst:

This letter is to reaffirm to you that Old Dominion University (ODU) possesses a Municipal Small Storm Sewer System permit, permit # VAR040078. One of the requirements of this permit is that we are obligated to notify you of the interconnection of ODU's storm sewer system to that of the City's storm sewer system. Please feel free to contact me at your convenience should you have any questions or concerns regarding any aspects of our system or permit requirements.

Sincerely,

Douglas Alexander
Director, Environmental Health and Safety
Old Dominion University
dalexand@odu.edu
(757)683-4495

Dry Weather Inspection List

Attachment D

Date: 3/26/24

List of Known Storm Water Outfalls/Nodes		Wet/ dry	Condition	Odor	Sheen	Debris	Comments
Descriptions	Location	Type					
78" ERPC	Powhatan Ave	Outfall	tidal	good	none	none	tidal creek
60"x 42"	Behind Rogers Hall	Outfall	tidal	good	none	none	tidal creek
(2)48" RCP	Crossing 49 th Street beside Rogers Hall	Outfall	tidal	good	none	none	Hidal Creek
Grate	Out front of Webb stairs, Facing Lions den at corner of Constant hall. 10 ft from Webb	Node	Dry	good	none	none	
Manhole cover	49 th Street in between Dragas Hall and Visual Art Center on side walk next to road	Node	Dry	good	none	none	
Manhole cover	Corner of Kaufman Hall adjacent to Greek rock and 3ft from side walk facing open field.	Node	Dry	good	none	none	
Grate	Road side entering child study parking lot	Node	Dry	good	none	none	

Dry Weather Inspection List

Attachment D

Date:

Manhole Cover	Outside of	Node				
	Oceanography bld on Elkhorn street where bld sidewalk meets road		Dry	good	none	none

BMP Inspection Checklist -

0.39" on 4/21/24

Date: 4/23/24

BMP	Location	Inlet/Outlet	Erosion	Stability	Debris	Comments
Wet Retention Basin	Oceanography Building	clear	none	good	none	
Vortech	Whitehurst Parking Lot #42					
Vortech	Constant Hall					
Vortech	Parking Garage 43 rd Street					Cleaned by Bay ENV. on 5/1/24
Wet Retention Basin	Gornto Teletechnet	clear	none	good	none	
Bio-retention Basin	EC&S	clear	none	good	none	
Bio-retention Basin	Indoor Tennis Center	clear	none	good	none	
Infiltration Trench	Wrestling	clear	none	good	none	
Filterra	Physical Sciences					
Filterra	Student Recreation Center					Maintenance done by Bay ENV. 5/16/24
Cistern	Roseann Runte Quad	clear	N/A	good	none	
Cistern	Game Day Building	clear	N/A	good	none	
Dry Detention Basin	Student Success	clear	none	good	none	
Bio-retention Basin	Dragas Hall	clear	none	good	none	
Bio-retention Basin	Diehn Fine Arts	clear	none	good	none	
Filterra	New Art Building					Serviced by Bay ENV
Bio-retention Basin	Engineering Systems	clear	none	good	none	
Filterra	Hixon Art					Serviced by Bay ENV

Bio-retention Basin	New Education	clear	none	good	none
Permeable Pavers	New Education	clear	none	good	none
Bio-retention Basin	Child Study	clear	none	good	none
Permeable Pavers	Football Stadium	clear	none	good	none
Bio-retention	SRC Turf North	clear	none	good	none
Bio-retention	SRC Turf South	clear	none	good	none
Bio-retention	Dominion House	clear	none	good	none
Permeable Pavers	New Chemistry	clear	none	good	none
Permeable Pavers	Health and Wellness CTR				none
					not complete at time of inspection

Attachment F

CERTIFICATION STATEMENT AND SIGNATORY REQUIREMENTS FOR MS4 PERMIT APPLICATIONS AND REPORTS

As required by 9VAC25-870-370 B, all reports required by state permits, and other information requested by the board shall, be signed by a responsible official or by a duly authorized representative of that person. A responsible official is:

- 1. For a corporation: by a responsible corporate officer. For the purpose of this section, a responsible corporate officer means: (i) a president, secretary, treasurer, or vice-president of the corporation in charge of a principal business function, or any other person who performs similar policy-making or decision-making functions for the corporation, or (ii) the manager of one or more manufacturing, production, or operating facilities, provided the manager is authorized to make management decisions that govern the operation of the regulated facility, including having the explicit or implicit duty of making major capital investment recommendations, and initiating and directing other comprehensive measures to assure long-term environmental compliance with environmental laws and regulations; the manager can ensure that the necessary systems are established or actions taken to gather complete and accurate information for state permit application requirements; and where authority to sign documents has been assigned or delegated to the manager in accordance with corporate procedures;
2. For a partnership or sole proprietorship: by a general partner or the proprietor, respectively; or
3. For a municipality, state, federal, or other public agency: by either a principal executive officer or ranking elected official. For purposes of this section, a principal executive officer of a federal agency includes (i) the chief executive officer of the agency, or (ii) a senior executive officer having responsibility for the overall operations of a principal geographic unit of the agency.

A person is a duly authorized representative only if:

- 1. The authorization is made in writing by a person described above;
2. The authorization specifies either an individual or a position having responsibility for the overall operation of the regulated facility or activity such as the position of plant manager, operator of a well or a well field, superintendent, position of equivalent responsibility, or an individual or position having overall responsibility for environmental matters for the company. A duly authorized representative may thus be either a named individual or any individual occupying a named position; and
3. The written authorization is submitted to the department.

CERTIFICATION

I certify under penalty of law that this document and all attachments were prepared under my direction or supervision in accordance with a system designed to assure that qualified personnel properly gather and evaluate the information submitted. Based on my inquiry of the person or persons who manage the system, or those persons directly responsible for gathering the information, the information submitted is, to the best of my knowledge and belief, true, accurate, and complete. I am aware that there are significant penalties for submitting false information, including the possibility of fine and imprisonment for knowing violations.

Handwritten signatures and dates for Responsible Official Signature, Date, MS4 Permit Administrator, and Date.

VAR 040078 Old Dominion University
Permit Number MS4 Name

